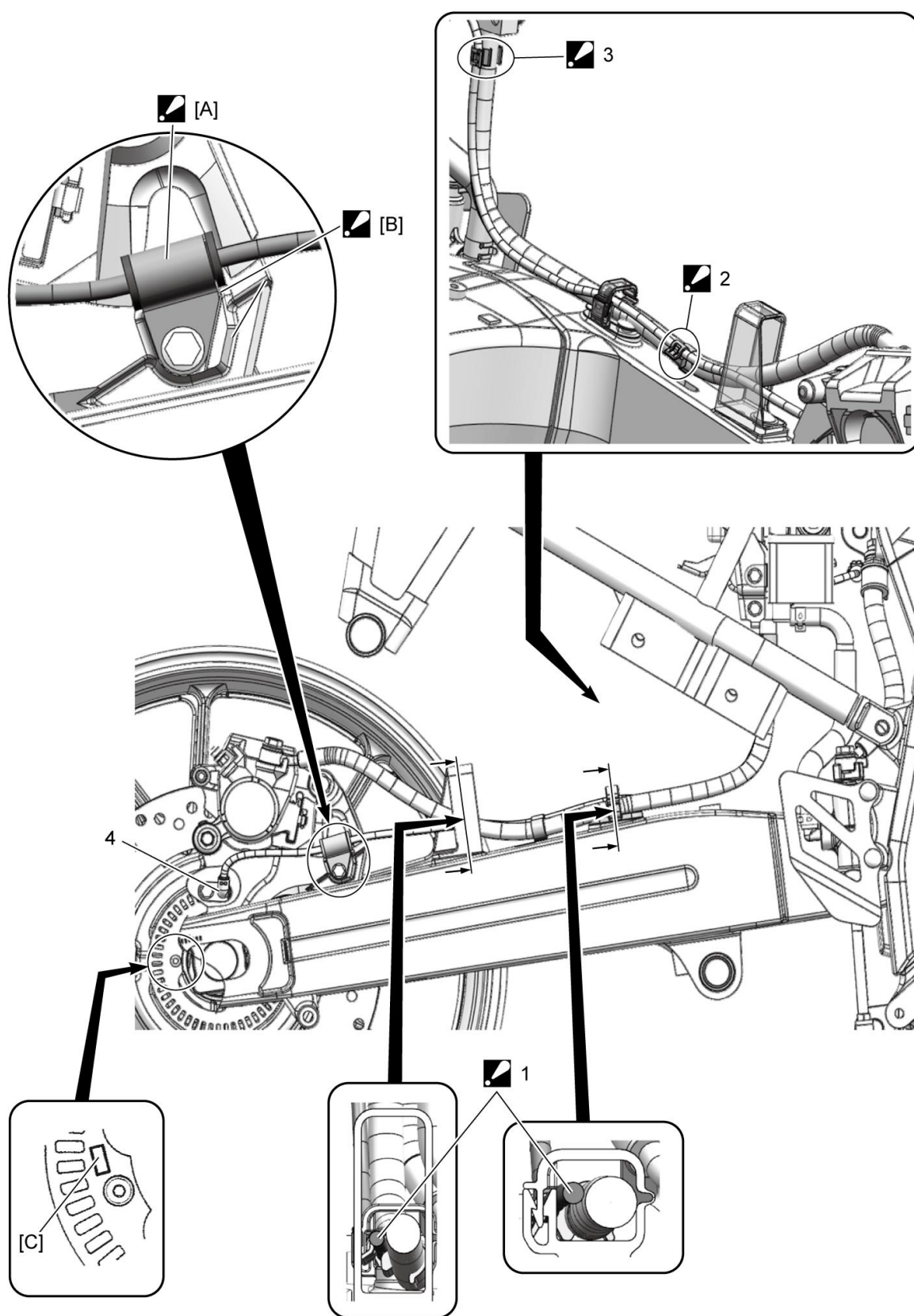







4E



Rear Wheel Speed Sensor Routing Diagram



 [A]:	Fix the wheel speed sensor lead wire sleeve to the clamp firmly.	 2.	Clamp Clamp the wheel speed sensor lead wire at inside of the brake hose.
 [B]:	After positioning the clamp with the stopper, tighten the bolt.	 3.	Clamp Clamp the white making of the wheel speed sensor lead wire to inside of the brake hose end fitting.
[C]:	Outside marking.	4.	Rear wheel speed sensor
 1.	Rear wheel speed sensor lead wire : Pass the rear wheel speed sensor lead wire to inside of the guide.		